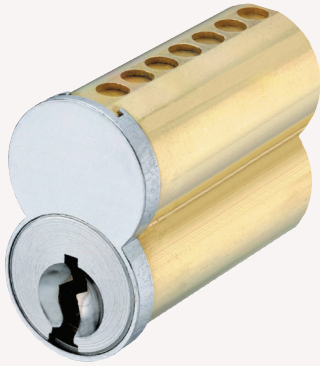


Medeco^B Small Format Interchangeable Core



Medeco^B Cores

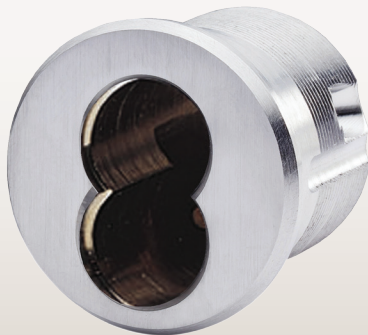


Medeco^B Keyblanks

Technical Information:

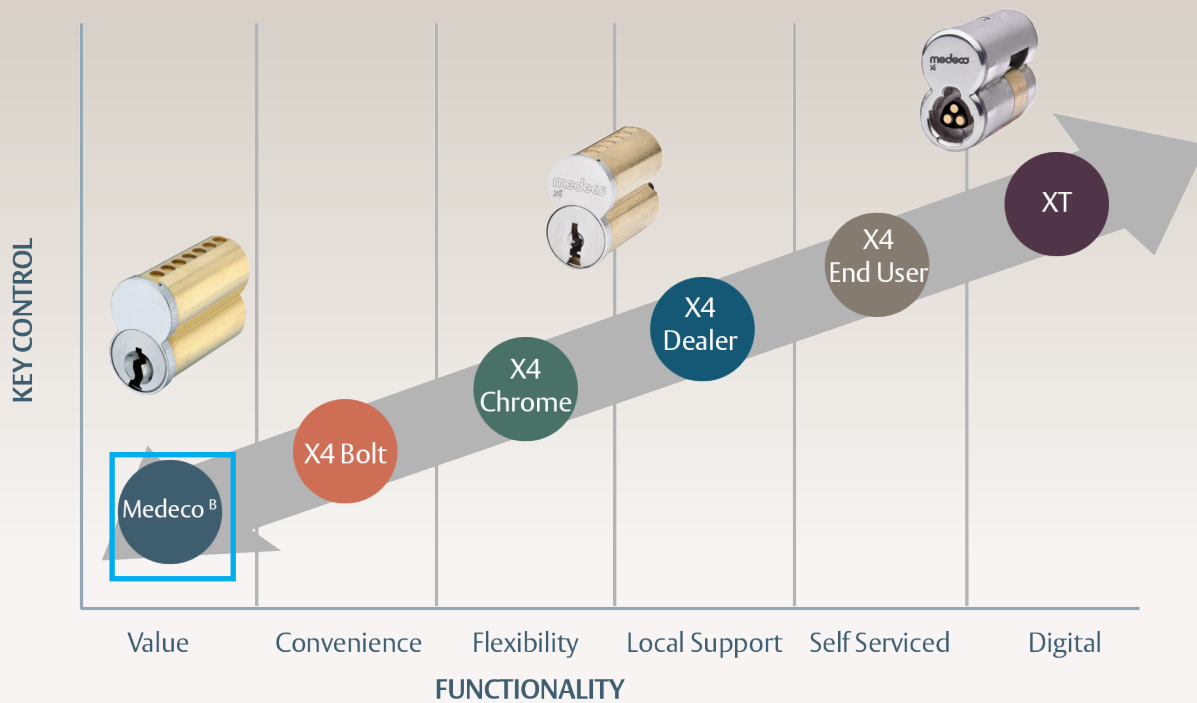
- Solid brass construction
- Reinforced sleeve design
- Plain face
- 6 & 7 pin unpatented SFIC
- Sleeve, shell, plug & face plate made of brass
- Keyway stamped on the back of the plug
- Individually capped pin chambers

SFIC Housings



Available Keyways:





What is Medeco^B?

Medeco^B is a Small Format Interchangeable Core (SFIC), available in 27 industry standard keyways.

What finishes are available in Medeco^B?

05 Bright Brass, 06 Satin Brass, 09 Antique Brass, 10 Satin Brass Blackened, 11 Bright Bronze, 12 Satin Bronze, 13 Dark Bronze/Oil Rubbed, 18 Bright Nickel, 19 Satin Nickel, 20 Antique Nickel, 22 Flat Black, 24 Dark Bronze/Clear Coat, 25 Bright Chrome and 26 Satin Chrome.

Who is the ideal End User?

Medeco^B is an affordable alternative for end users currently using industry standard unpatented SFIC Keyways.

How can Medeco^B SFIC be ordered?

Medeco^B SFIC can be ordered combined (A2) and uncombined. Keys are available as blanks, cut change keys or cut control keys.

Is a contract needed to purchase Medeco^B?

Channel partners do not need a contract to purchase Medeco^B SFIC Cores.

What is the Medeco^B Core and Key constructed of?

The core's shell, sleeve, plug, and face-plate are made of brass. The keys are made of nickel silver.

What Pin counts are offered?

6 or 7 pin configurations are available. Keys are 7 pin length, using tip stop for 6 pin.

What kind of key machine is required to cut Medeco^B Keys?

Keys can be cut on standard SFIC key cutting equipment, such as HPC1200CM, Blue Punch, BEST old-style combinator, BEST new style combinator, ITL and others.

What stamping is on the cores?

Medeco^B comes with a plain face. The keyway is stamped on the back of the plug.