



YALE EDGE

Seabrook Sqr Rose



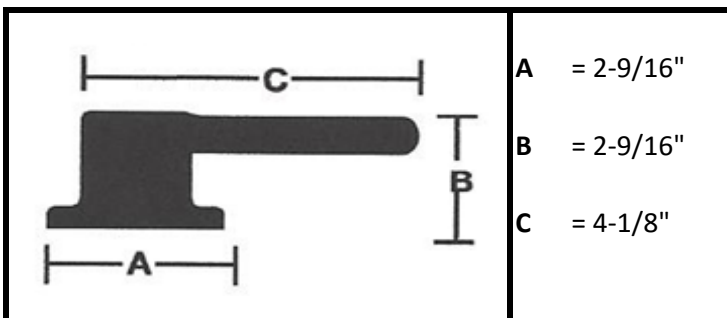
Standard Specifications:

Door Prep	Cross bore: 2-1/8" Edge Bore: 1" Latch face: 1" x 2-1/4" RC
Door Thickness	1-3/8" to 1-3/4" doors
Latch Std product	Tubular 2-3/8" or 2-3/4" RC adjustable Tubular Drive-in latch available
Strike	1-3/4" x 2-1/4" Radius Corner Full lip strike
Door Handing	Reversible Levers
Cylinder	5 Pin KW-1 Compatible Optional SC-1 available
Keying	KA5 std; other options available

Features

- Meets or exceeds Grade 3 standards
 - Std latch/strike screw is combination wood/metal screw
- Dust Box Included

Dimensions:



Model	Function	CTN QTY	ItemNumber	
			ItemNumber	Available finishes:
WD81	Dummy	20	US15/619 SBD15SQ	619 (15) 10BP Black(B)
WD71	Entry	20	SBE15SCSQ	
WD21	Privacy	20	SBPR15SQ	
WD11	Passage	20	SBPA15SQ	