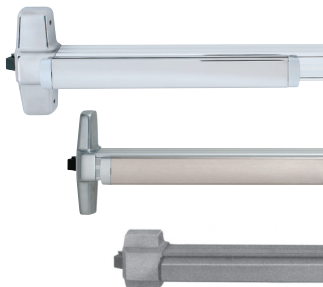


The first UL certified exit device to meet the new California Building Code Operating Force requirement

VON DUPRIN

AX exit devices

Featuring the 98/99, 33/35A and 22 Series devices



Changes to California Building Code effective January 1, 2014



There were many changes to the new California Building Code that took effect January 1st, 2014. One change impacting operable door hardware, including panic hardware, was the new requirement in chapter 11B for hardware to operate with a maximum of 5 pounds of force operation. "Operable parts shall be operable with one hand and shall not require tight grasping, pinching, or twisting of the wrist. The force required to activate operable parts shall be 5 pounds (22.2N) maximum"¹.

Von Duprin has the solution certified by UL to "Meet California Building Code (2013) Sec. 11B-309.4"

In order to ensure compliance, Von Duprin and UL tested the products both before and after cycling. **The testing was administered as follows:**

1. Unloaded operating forces must be below 5 lbs. before cycling.
2. Cycle device to 100,000 cycles.
3. Unloaded operating forces must be below 5 lbs. after cycling.
4. Loaded operating forces must be below 50 lbf. with a 250 lb. load on the door after cycle (Safety).

Von Duprin AX offering

| Series | Device Type | Functions |
|----------------------------------|-----------------------------------|--|
| 98/99 Fire & panic | AX98/99 | Exit only / Dummy trim Night latch / Night latch - Optional Pull Lever / Lever-Blank Escutcheon Lever-Rigid-Dummy trim Lever-Rigid-Night latch |
| | AXXP98/99 | |
| | AX98/9927 LBR | |
| | AX98/9949 LBL AX98/9950WDC-LBL | |
| 94/95 Fire & panic | 94/9547 | Exit only / Dummy trim Night latch / Lever / Lever-Blank Escutcheon / Lever-Rigid-Dummy trim Lever-Rigid-Night latch |
| | AX33/35A | Exit only / Dummy trim Night latch / Night latch - Optional Pull Lever / Lever-Blank Escutcheon Lever-Rigid-Dummy trim |
| 33/35A Fire & panic | AX33/3549A LBL | |
| | AX33/3349A-F LBL | |
| | AX33/3549A-F LBL-AFL | |
| 22 Fire & panic | AX22 | Exit only / Dummy trim Night latch / Night latch - Optional Pull Lever / Lever-Blank Escutcheon |
| | AX2227-LBR | |

How to identify the Von Duprin AX device

1. Look for the "AX" Prefix in the door schedule and/or specification.
2. In the field, look for the California Compliance note on the UL Label and the AX Device Label. Both labels can be found on the center case cover of the exit device as shown below.



Learn more: ax.allegion.com

© 2017 Allegion
010332, Rev. 1/17
www.allegion.com/us


ALLEGION™