

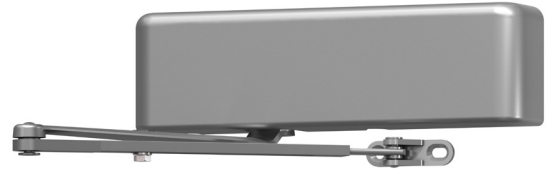


Surface mounted closer

# 4020 Series

Overview

The 4020 is a heavy duty closer with adjustable spring power using the LCN Green Dial. This creates a custom fit to meet the specific demands of high traffic use and brings reliable performance.



Cylinder

4021(6)-3071

Cast iron cylinder assembly

Handing

Handed

Sizing

Adjustable 1-5 or sized 6

- 4021 (adjustable from size 1 to 5)
- 4026 (Size 6, DEL not available)

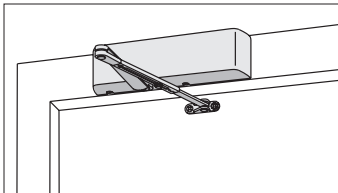
Available cylinder options

---

DEL	Delayed action cylinder
-----	-------------------------

---

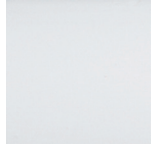
Mounting



Top jamb (push side)

### Finishes

#### Powder coat finishes



**689**  
Aluminum



**690**  
Statuary Bronze



**691**  
Light Bronze



**693**  
Black



**695**  
Dark Bronze



**696**  
Brass

150+ additional custom colors available using the RAL numbering system

#### Metal plated finishes



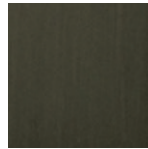
**632**  
Bright Brass



**633**  
Satin Brass



**639**  
Satin Bronze



**616**  
Satin Bronze,  
Blackened



**646**  
Satin Nickel



**651**  
Bright Chrome



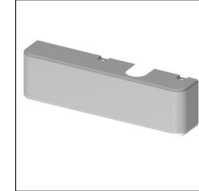
**652**  
Satin Chrome

#### Available finish options

MTLPC	Brite metallic: Custom powder coat finish, which resembles that of 651 or 652 plated finish.
SRI	For installations where a higher level of protection against weather conditions, or the effects of a potentially corrosive atmosphere is required, LCN offers a special rust inhibiting (SRI) process. Ferrous metal components receive an SRI pretreatment and a standard powder coat finish of your choice, or a custom powder coat finish for a nominal additional cost. Closers treated with the SRI process exceed the 100 hour protection level available with standard LCN powder coated finishes.

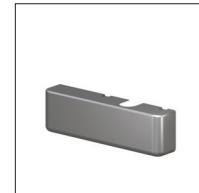
### Covers

#### Standard cover



- 4020-72**  
**Plastic cover**
- Handed
  - Standard

#### Optional cover



- 4020-72MC**  
**Metal cover**
- Handed
  - Required for plated finishes and custom powder coat finishes
  - Optional

### Arms



**4020-3077**  
**Regular arm**  
 ■ Non-handed



**4020-3077L**  
**Long arm**  
 ■ Non-handed  
 ■ Includes 4020-79LR for deep reveals.  
 ■ Optional

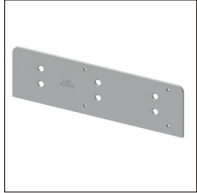


**4020-3049**  
**Hold-open**  
 ■ Handed  
 ■ Provides hold-open function, adjustable at elbow  
 ■ 5 3/4" (146 mm) maximum reveal, 140° hold open  
 ■ Optional



**4020-3049FL**  
**Fusible link**  
 ■ Handed  
 ■ Releases hold-open function, adjustable at shoe, when exposed to temperatures above 165° F  
 ■ 3 7/8" (98 mm) maximum reveal  
 ■ Optional  
 ■ NOTE: Check local codes before specifying FL arms.  
 NOT A life safety product!

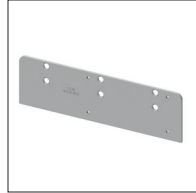
## Installation accessories



### 4020-18

#### Plate

- Required where head frame is less than 3 7/16" (87 mm)
- Requires minimum 1 3/4" (44 mm) minimum head frame and 2" (51 mm) top rail 3 7/8" (98 mm) maximum reveal



### 4020-18G

#### Plate

- For flush ceiling condition
- Requires minimum 1 3/4" (44 mm) minimum head frame and 2 3/4" (70 mm) top rail

## Fasteners

Self-reaming and tapping screws included standard

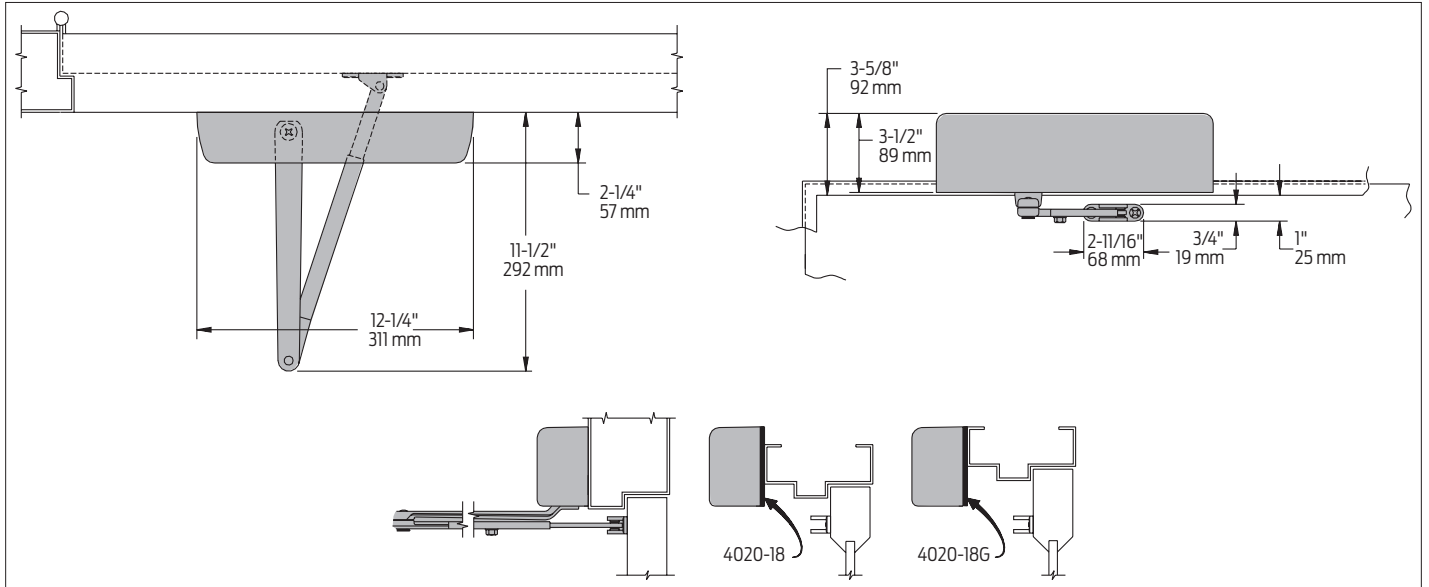
### Fastener pack options

TBSRT	TB <sup>1</sup> with self-reaming and tapping screws
WMS	Wood and machine screw
TBWMS	TB <sup>1</sup> , wood and machine screw
TORX	TORX machine screw
TBTRX	TB <sup>1</sup> and TORX machine screw

<sup>1</sup> Specify door thickness if other than 1 3/4"

## Dimensions and mounting

### Top jamb (push side) mounting



## Specifications

Accessibility	Available with less than 5.0 lbs. opening force on 36" door
Certifications/ approvals	<ul style="list-style-type: none"> <li>■ Grade 1 - ANSI A156.4</li> <li>■ UL 10C</li> <li>■ Meets BAA - Buy American Act</li> </ul>
Degree of operation	Hinge (pull) side Max opening: 180° Hold open: 140°
Environmental conditions	<ul style="list-style-type: none"> <li>■ Approved for interior use</li> <li>■ Approved for exterior use (SRI coated only)</li> <li>■ LCN's standard all weather fluid performs to temperature ranges from 120°F (49°C) to -30°F (-35°C)</li> <li>■ LCN's powder coat finish surpasses 100 hours of salt spray which is over four times the ANSI standard for corrosion resistance.</li> </ul>
Warranty	30 years
Standard features	<ul style="list-style-type: none"> <li>■ Cast iron body</li> <li>■ Full complement bearing</li> <li>■ 1 1/2" diameter piston</li> <li>■ 11/16" diameter double heat treated pinion journal</li> </ul>